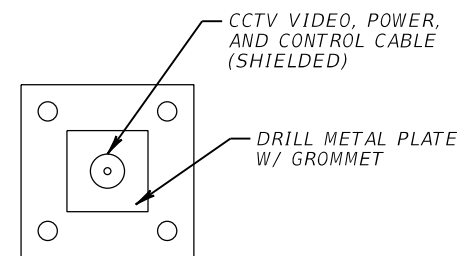
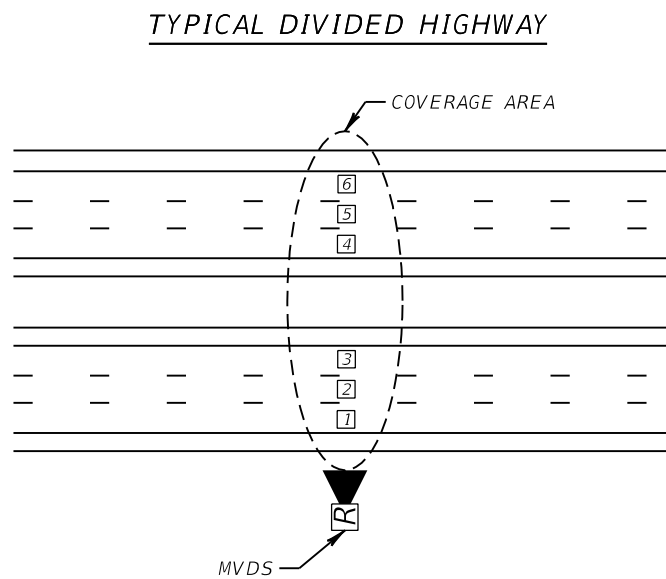
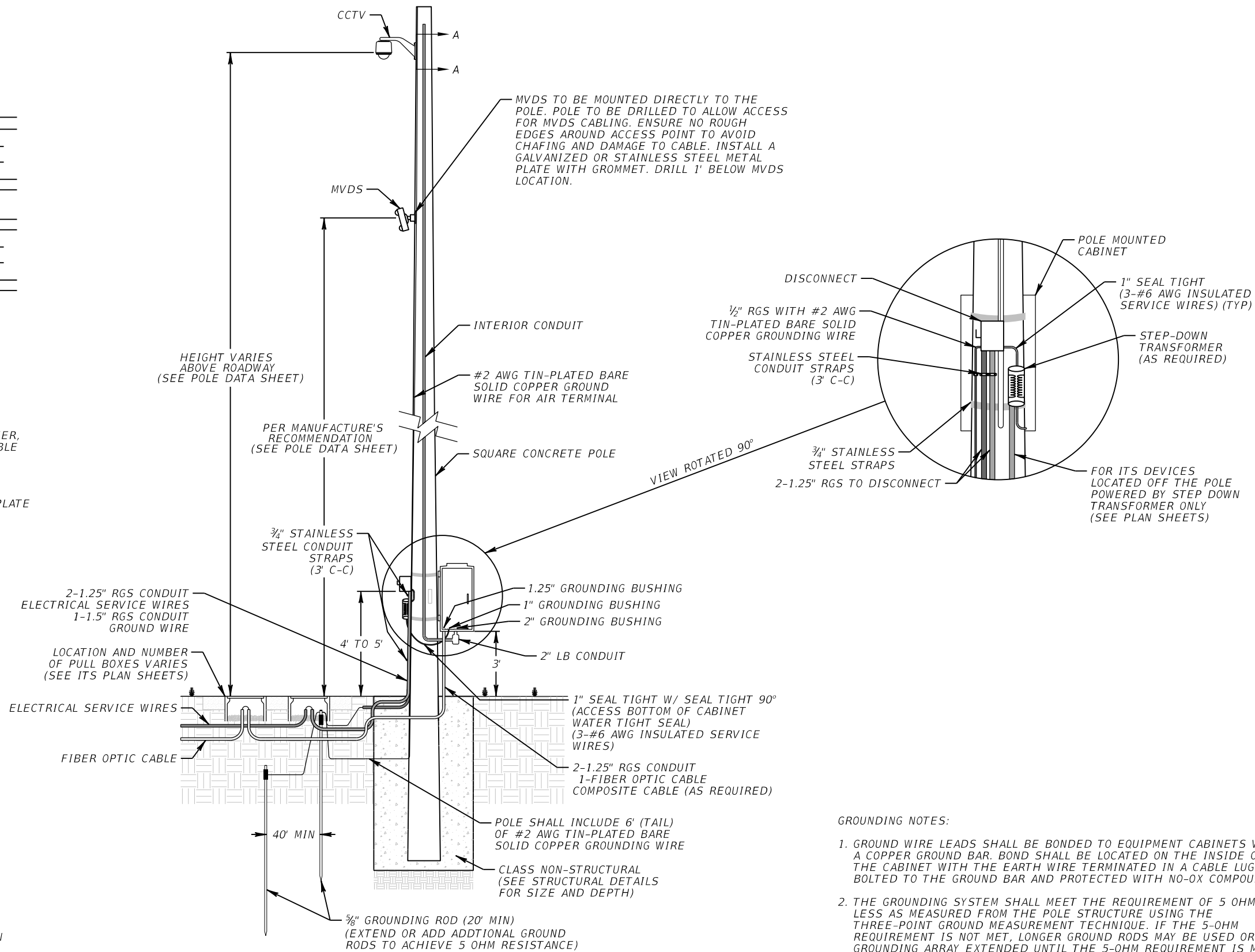


TYPICAL CCTV & MVDS INSTALLATION DETAILS



SECTION A-A
NTS



- NOTES:**
1. MOUNT CCTV CAMERA ON THE SIDE OF POLE NEAREST INTENDED FIELD OF VIEW AND AVOID OCCLUDING THE VIEW WITH THE POLE.
 2. POLE MOUNTED CABINET TO BE ORIENTED PER THE ITS PLAN SHEETS.

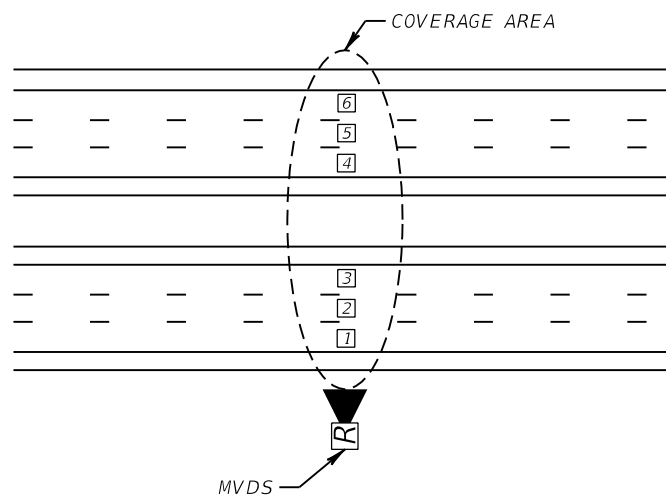
- GROUNDING NOTES:**
1. GROUND WIRE LEADS SHALL BE BONDED TO EQUIPMENT CABINETS WITH A COPPER GROUND BAR. BOND SHALL BE LOCATED ON THE INSIDE OF THE CABINET WITH THE EARTH WIRE TERMINATED IN A CABLE LUG, BOLTED TO THE GROUND BAR AND PROTECTED WITH NO-OX COMPOUND.
 2. THE GROUNDING SYSTEM SHALL MEET THE REQUIREMENT OF 5 OHMS OR LESS AS MEASURED FROM THE POLE STRUCTURE USING THE THREE-POINT GROUND MEASUREMENT TECHNIQUE. IF THE 5-OHM REQUIREMENT IS NOT MET, LONGER GROUND RODS MAY BE USED OR THE GROUNDING ARRAY EXTENDED UNTIL THE 5-OHM REQUIREMENT IS MET.

REVISIONS				METRIC ENGINEERING, INC. ROBERT MASTASCUSA, P.E. # 66600 615 CRESCENT EXECUTIVE CT SUITE 524 LAKE MARY, FLORIDA 32746 TEL. (407) 644-1898 FAX. (407) 644-2376 CERTIFICATE OF AUTHORIZATION 2294	STATE OF FLORIDA DEPARTMENT OF TRANSPORTATION			ITS MOUNTING DETAILS	SHEET NO.
DATE	DESCRIPTION	DATE	DESCRIPTION		ROAD NO.	COUNTY	FINANCIAL PROJECT ID		IT-113
					SR 93	MARION	428213-2-52-02		

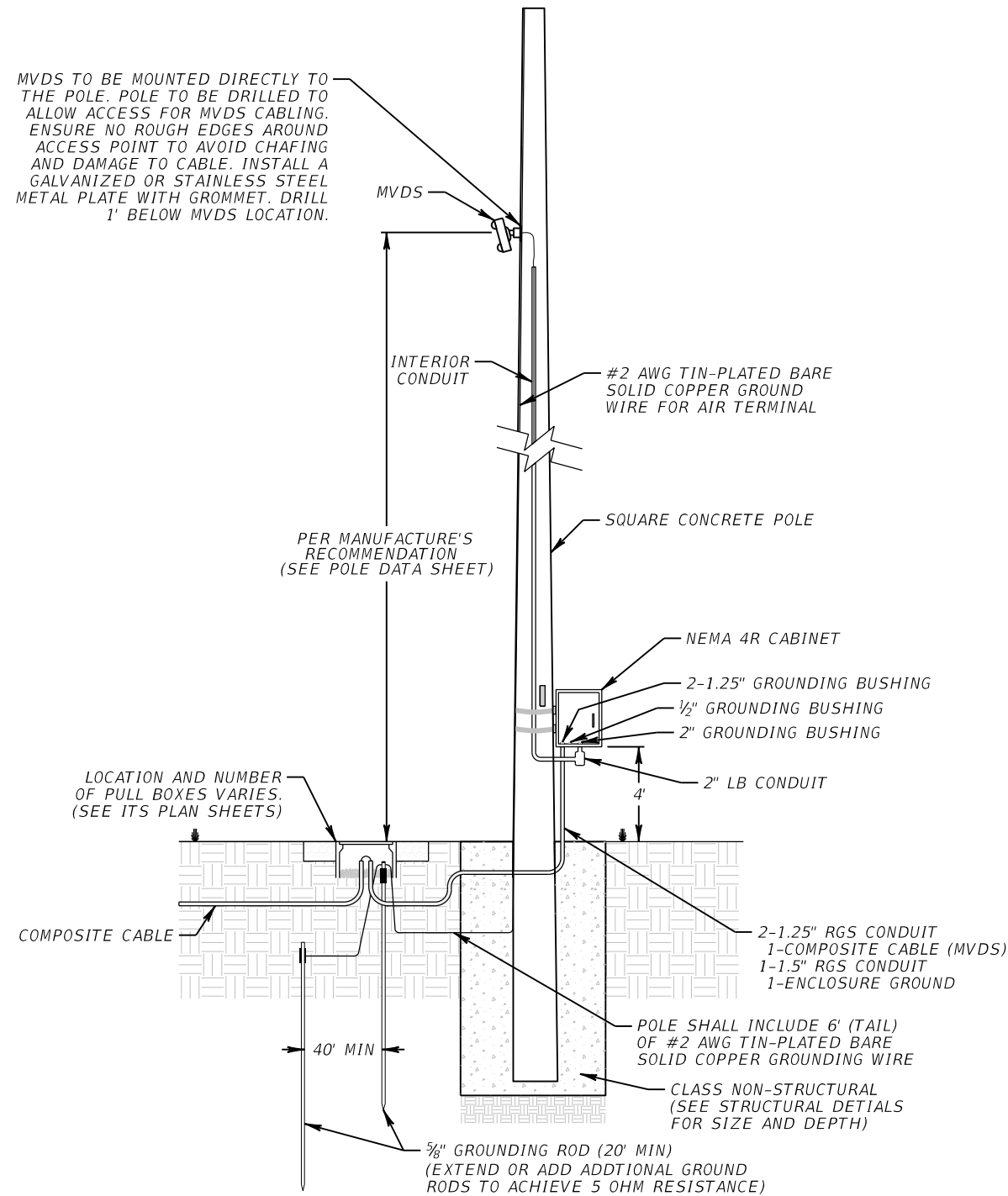
NOTICE: THE OFFICIAL RECORD OF THIS SHEET IS THE ELECTRONIC FILE SIGNED AND SEALED UNDER RULE 61G15-23.003, F.A.C.

TYPICAL MVDS INSTALLATION DETAILS

TYPICAL DIVIDED HIGHWAY



MVDS TO BE MOUNTED DIRECTLY TO THE POLE. POLE TO BE DRILLED TO ALLOW ACCESS FOR MVDS CABLING. ENSURE NO ROUGH EDGES AROUND ACCESS POINT TO AVOID CHAFING AND DAMAGE TO CABLE. INSTALL A GALVANIZED OR STAINLESS STEEL METAL PLATE WITH GROMMET. DRILL 1' BELOW MVDS LOCATION.



NOTES:
1. POLE MOUNTED CABINET TO BE ORIENTED PER THE ITS PLAN SHEETS.

GROUNDING NOTES:
1. GROUND WIRE LEADS SHALL BE BONDED TO EQUIPMENT CABINETS WITH A COPPER GROUND BAR. BOND SHALL BE LOCATED ON THE INSIDE OF THE CABINET WITH THE EARTH WIRE TERMINATED IN A CABLE LUG, BOLTED TO THE GROUND BAR AND PROTECTED WITH NO-OX COMPOUND.
2. THE GROUNDING SYSTEM SHALL MEET THE REQUIREMENT OF 5 OHMS OR LESS AS MEASURED FROM THE POLE STRUCTURE USING THE THREE-POINT GROUND MEASUREMENT TECHNIQUE. IF THE 5-OHM REQUIREMENT IS NOT MET, LONGER GROUND RODS MAY BE USED OR THE GROUNDING ARRAY EXTENDED UNTIL THE 5-OHM REQUIREMENT IS MET.

REVISIONS				METRIC ENGINEERING, INC. ROBERT MASTASCUSA, P.E. # 66600 615 CRESCENT EXECUTIVE CT SUITE 524 LAKE MARY, FLORIDA 32746 TEL. (407) 644-1898 FAX. (407) 644-2376 CERTIFICATE OF AUTHORIZATION 2294	STATE OF FLORIDA DEPARTMENT OF TRANSPORTATION			ITS MOUNTING DETAILS SHEET NO. IT-114
DATE	DESCRIPTION	DATE	DESCRIPTION		ROAD NO.	COUNTY	FINANCIAL PROJECT ID	
					SR 93	MARION	428213-2-52-02	

NOTICE: THE OFFICIAL RECORD OF THIS SHEET IS THE ELECTRONIC FILE SIGNED AND SEALED UNDER RULE 61G15-23.003, F.A.C.